

# DIDCOT RAILWAY CENTRE

Living Museum of the Great Western Railway



## Welcome to Didcot Railway Centre!

You will find us behind Didcot Parkway Station.



There are 2 entrances to the Railway Centre:

The first is through the main ticket barriers of the station.



For some special events, you may go in through the side entrance.



It will always be clear and obvious which entrance you should use.



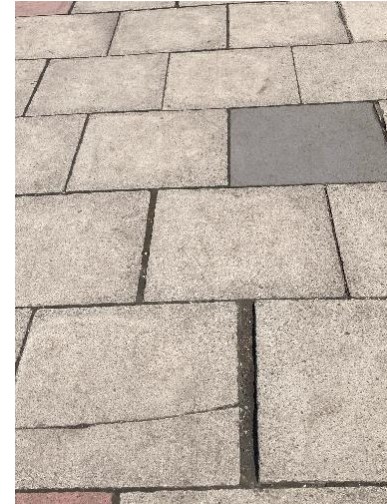
Once inside the station, you walk through the subway until you find these doors.



Once you are inside the main gates, if you need to use a ramp to access us turn left. Otherwise, if you turn right, there are stairs which lead to the ticket office.



We have lots of different types of paths and surfaces at the centre. Some of these surfaces can be quite slippery when it is raining or when it is icy. Be careful as you walk around the centre as there are a lot of trip hazards.





The men's toilets are opposite the engine shed.



The Ladies' toilets are behind the shop. You need to go past the air raid shelter to find them.



There is a play area in the picnic zone by Carriages and Wagon.



We hope you enjoy your day at Didcot Railway Centre. If you need any extra help on the day, there will always be someone in the Enquiry Office who will be able to help you.

